



Richmond College
සිලි වාං ජනිතයා - 2020
First Term Test - 2020

Mathematics

Time – 1 hour 30 min.

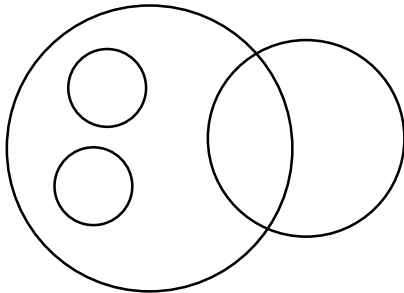
Name / Index No :

Grade 6

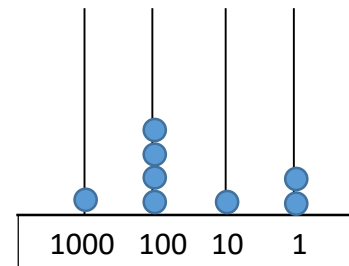
Part I

* Answer for all questions on paper it self.

(01) How many circles are there in this figure.



(02) What is the value represented by the digit on the hundred place of abacus.



(03) Write these numbers in ascending order.
-2, 0, -5, 4

(04) Find the value.
 40×38

(05) The population of certain country in the last year is “ Eight million eighty thousand five hundred four” write that number in digit form.

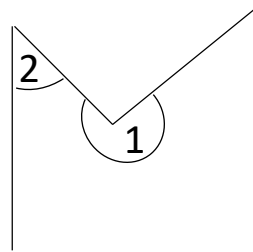
(06) Fill in the blanks.

$$\begin{array}{r}
 \square \quad \square \quad \square \\
 + \quad 6 \quad 3 \quad 7 \\
 \hline
 8 \quad 7 \quad 6 \\
 \hline
 \hline
 \end{array}$$

(07) Name the type of angle.

1 =

2 =



(08) Write 205 seconds in minutes and seconds.

(09) Write all the integers between -3 and 2.

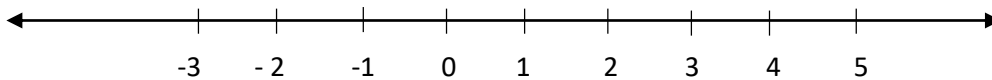
(10) Simplify $4085 + 273 + 28$

(11) What is the opposite direction to the North ?

(12) A certain number is multiplied by 100 and divided by 10 then the answer is 320.what is that number ?

(13) The present students of a certain school on a rainy day is 478 . Round off this to the nearest 10.

(14)



Mark following points on the number Line.

$$A = -3 \text{ and } B = 4$$

(15) What is the amount received to a person . if 3248 rupees divide equally among 8 persons.

(16) Fill the blank cage

$$30 \times \square + 5 = 3005$$

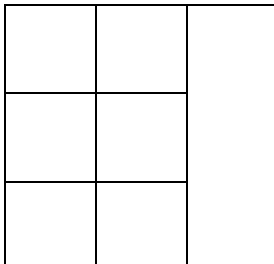
(17) Write in words.
24 000 052 000

(18) Choose and write the suitable value in the blank.

$$-3 < \dots (-7, -5, -2)$$

(19) 04th February of 1882 “ write this date in. Standard international form.

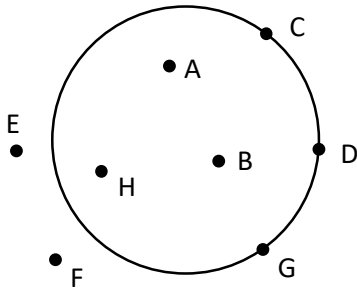
(20) How many squares in this figure.



(20 x 2 = 40 Marks)

* Answer for Five questions only

(01) (a)



- I. Name two points which are on the circle
- II. Name three points which are in the circle

(b) The number '14865',

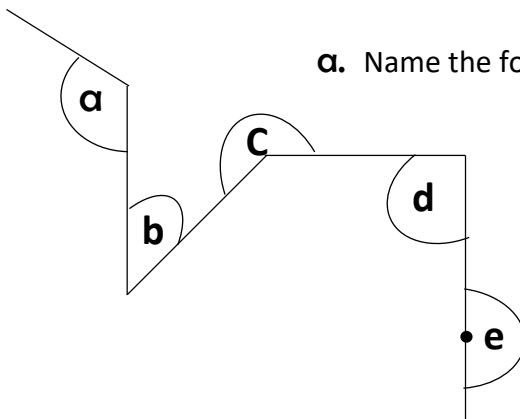
- I. Represent on an abacus.
- II. What is the place value of digit 8 ?
- III. What is the value represent by the digit 4 ?

(02) The number of persons who visited an exhibition during 3 days as follows.

Date	Friday	Saturday	Sunday
Number of persons	1428	2335	1278

- I. Find the total number of persons who visited the exhibition in three days.
- II. If 1849 Females visited the exhibition find the number of male visitors.
- III. If the entrance fee is Rs.100 per person find the total income received during the three days.
- IV. If the total income is divided equally among the 20 organizers find the amount received to a person.

(03)



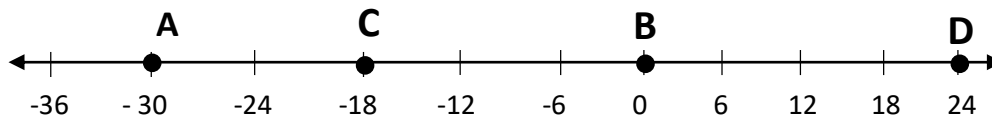
a. Name the following angles.

- I. **a** =
- II. **b** =
- III. **c** =
- IV. **d** =
- V. **e** =

b.

- I. Write the letter of the highest angle out of the angles a and c
- II. Name two types of angles which are greater than a right angle.

(04) Answer according to the following number Line.



- I. What is the letter that represent highest value.
- II. What is the letter that represent lowest value.
- III. Find the value of $D - B$ (subtract two values)
- IV. Write A , B , and C in ascending order.
- V. Join B and C using the signs $>$ or $<$.

(05) In the annual trip of grade 06 the bus left the school at 5.45 a.m. and returned back at 10.20 p.m.

- I. Write the arrival time in standard form.
- II. What is the elapsed time to the journey.
- III. If the total participants to the trip is 338 round off that is to the nearest 10.
- IV. If the rounded off value of the number of students travelled in a bus is 50 , what could be the maximum number of students in that bus?
- V. Show that A Student who left the home at 4.50 a.m. and travelled during 1 hour and 30 minutes to reach the school, could not participate to the trip.

(06) The population of three countries as follows.

A - 3400321583

B - 102184031

C - 60030000

- I. What is the country with minimum population.
- II. Separate the population of country A into zones.
- III. Write the population of country B in words.
- IV. Write the population of country C in words.