



රිච්මන්ඩ් විද්‍යාලය Richmond College
පළමු වාර්ෂික පරීක්ෂණ - 2020
First Term Test - 2020

Science

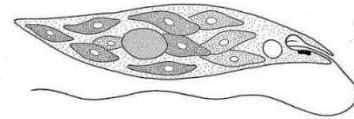
Time - 2 hrs

Name / Index No :

Grade 8

- Underline the **most correct** answer

- Microorganism that take part for fermentation of coconut water is
 - Bacteria
 - Virus
 - Fungi
 - Protozoa
- Type of micro-organism that **not** show respiration is
 - Bacteria
 - Fungi
 - Algae
 - Virus
- An amphibian is
 - Tortoise
 - Ichthyophis
 - Crocodile
 - Turtle
- Products formed due to fermentation is
 - Methane and ethyl alcohol
 - Ethyl alcohol and nitric acid
 - Oxygen and acetic acid
 - Carbon dioxide and ethyl alcohol
- The name of given microorganism is
 - Paramecium
 - Amoeba
 - Euglena
 - Chlamydomonas
- A disease spread due to protozoa infection is
 - Leishmaniasis
 - Polio
 - Dengue
 - Leprosy
- A brown colour gas is
 - Carbon dioxide
 - Nitrogen
 - Chlorin
 - Nitrogen dioxide
- A non-metal that exist in liquid state is
 - Iodine
 - Bromine
 - Lead
 - Mercury
- Given statements are related to the mass of fresh water, brackish water and marine water samples.
 - Masses are same in all
 - Mass of marine water is greater than the others
 - Fresh water has least mass



The **correct** statement / statements out of the above is

- Only a
 - Only B
 - Only C
 - Only B and C
- The philosopher who mentioned particulate nature of mater in very first time is
 - Dalton
 - Aristotle
 - Hypocrites
 - Democritus
 - Elements include in copper sulphate is
 - Copper, Sulphur, Oxygen
 - Copper, Sulphate
 - Copper, Phosphorous, Sulphur
 - Copper, Oxygen

12. The common feature for both Pisces and Aves is
 i. Having fins ii. Having gills iii. Warm blooded iv. Streamline body shape
13. The Standard International unit of measuring frequency is
 i. Watt ii. Pascal iii. Hertz iv. Newton
14. Musical instrument which is **not** producing sound by vibrating strings is
 i. Piano ii. Guitar iii. Sitar iv. Xylophone
15. The given type of roots can be seen in
 i. Prop roots – banyan
 ii. Stilt roots – banyan
 iii. Stilt roots – pandanus
 iv. Prop roots - pandanus



16. The specific feature only for solid is
 i. Having a fixed volume iii. Having a fixed shape
 ii. Free motion of particles iv. Ability to compress
17. An example for plant that converted leaves into thorns to minimize transpiration is
 i. Araliya (plumeria) ii. Kasa iii. Nawahandi iv. Cactus
18. List of materials can be compressed easily is
 i. Water, oxygen, nitrogen iii. Water vapor, oxygen, nitrogen
 ii. Aluminum, mercury, silver iv. Water, coconut oil, petrol
19. List of plants with tap root system is
 i. Curry leaves, Hinnaran, Kaladuru iii. Coconut, arecanut, palmyra
 ii. Mango, jak, sugarcane iv. Guava, mango, rose apple
20. **Not** an example for Cnidarian is
 i. Hydra ii. Sea anemone iii. Leach iv. Coral polyp

Part II

Instructions: 1st question is compulsory, write another 4 questions

1) The following animals were seen by a group of students who went to the zoo to observe the diversity of animals. Write the answer according to the list of given animals that they observed.

Leopard, giraffe, sea anemone, deer, bivalve, crocodile, bat, orangutan

- i.
 - a. Write the animals belong to the group invertebrates.
.....
 - b. Write a sessile organism.....
 - c. Name an animal that is not a bird even fly.
 - d. Write a reptile out of the above animals.
 - e. Name an animal that is a mammal.
 - f. Write the phylum of sea anemone.
- ii. Write main 2 features of animal that belong to the phylum Annelida.
.....
.....
- iii. Name an Arthropod with wings. How do you call their external skeleton?
.....
- iv. Tabulate two different features of Aves and Pisces.

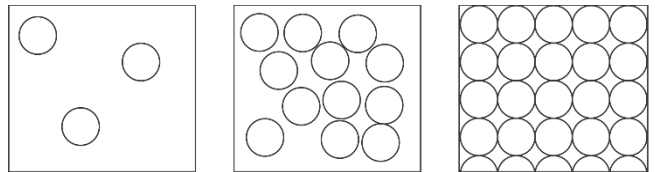
Aves	Pisces
.....
.....

- v. Write 2 advantages of animal classification.
.....
.....

2)

i. Given diagrams are illustrating arrangement of particles in 3 states of matter.

- a. States of matter
- b. Behavior of particles
- c. Attraction among particles
- d. Movement of particles
- e. Space between particles



- ii. Write the name of elements composed in given compounds
 - a. Methane -
 - b. Copper sulphate -
 - c. Sodium chloride -
- iii. What is the boiling point of liquid? -
- iv. What is the boiling point of distilled water? -
- v. What is the standard international unit of measuring density? -
- vi. Write the property of material according to the given description
 - a. Ability to stretch even applied slight force -
 - b. Ability to hammer without breaking to tiny pieces -
 - c. Ability to make wires -

3)

i. Given below are some roots of plants with special adaptations. Write the name of roots which adapted to perform specific function according to their living environment.

- a. Roots originated from branches -
- b. Absorbing water vapor from the atmosphere -
- c. Storage of foods -
- d. Ability to produce new plants -

ii. Write two main functions of roots

.....

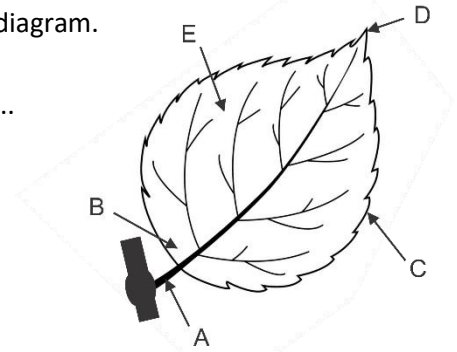
iii. Name the parts of leaf that denoted as A, B, C, D, E and F of given diagram.

iv. What is the main function of leaf?

.....

v. Write 2 adaptations of leaf for perform above function.

.....



vi. Write two main functions of plant stem.

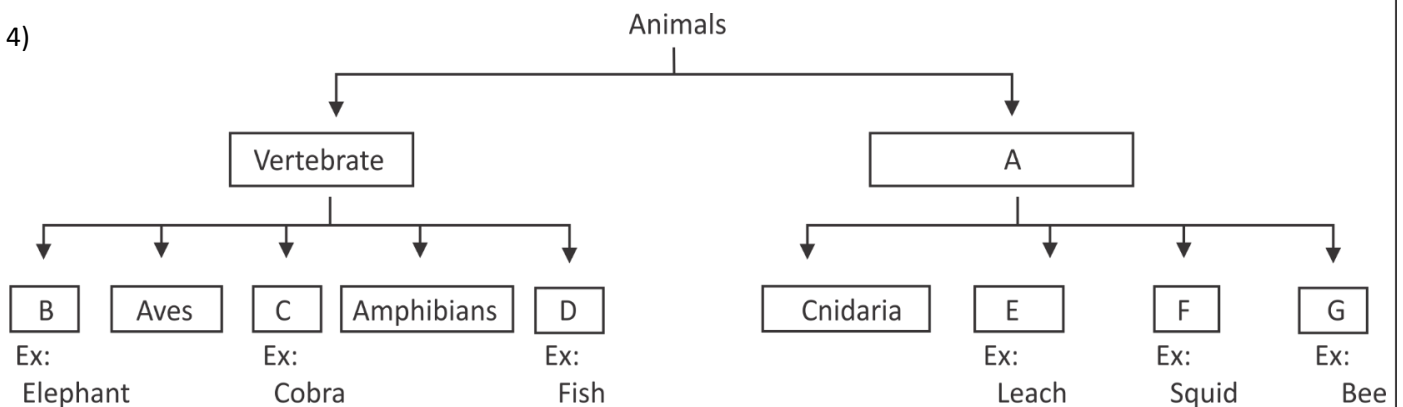
.....

vii. Write the function performed by roots of given plants

- a. Betel -
- b. Turmeric -
- c. Cactus -
- d. Potato -

viii. What is phyllotaxis?

4)



i. What is the main criteria use to classify animals?

.....

ii. Write the relevant class for B, C and D group of invertebrates.

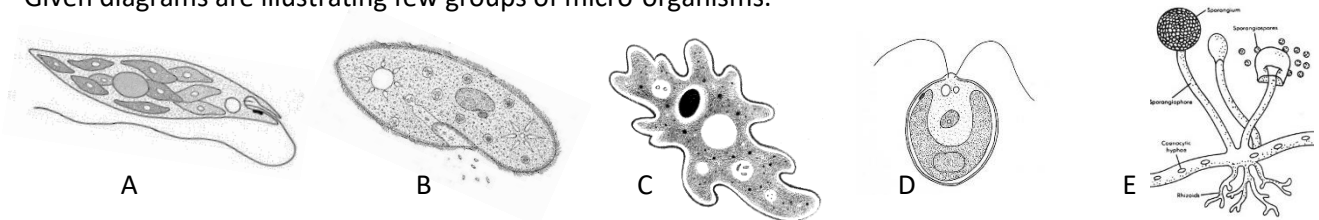
B - C - D -

iii. What is the group of animals denoted by the letter 'A'?

.....

- iv. Write the name of phylum denoted by letters E, F and G
 E - F - G -
- v. Write 3 specific features of animals belong to the class B
 1.
 2.
 3.
- vi. Write 3 specific features of animals belong to the class D
 1.
 2.
 3.
- vii. Write 2 differences between classes B and D
 1.
 2.
- viii. Name an animal that lays eggs in B.

5) Given diagrams are illustrating few groups of micro-organisms.

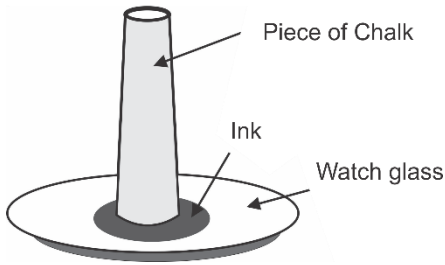


- i. Name A, B, C, D and E micro-organisms
 A. D.
 B. E.
 C.
- ii. Write 2 similarities can be seen among A and D
 1.
 2.
- iii. Write the locomotory organelles of micro-organisms A, B and C
 A. B. C.
- iv. Out of the above who is saprophytes?
- v. Write a living feature and two non-living features of viruses.
 Living feature -
 Non-living features -
- vi. Write 3 plants diseases due to micro-organisms
 1. 2. 3.
- vii. Write the group of micro-organisms that cause to spread given diseases.
 1. Common cold - 3. Diarrhea -
 2. Cholera - 4. Leishmaniasis -
- viii. Write the name of biologist who observed micro-organisms in very first time.

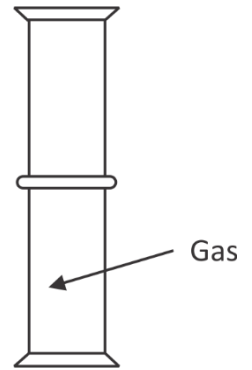
- ix. Write the way of spoiling given foods
 1. Sugar -
 2. Protein -
 3. Lipids -

6) A) Given below are two activities conducted to show discontinuous nature of matter.

A.



B.



ii. Complete the given table according to the observations of the above activities.

Activity	Observation	Conclusion
A		
B		

B. Musical instruments can be classified into 3 groups according the way of producing sounds.

i. Write 3 methods of producing sound with an example

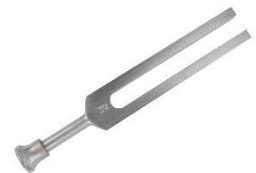
1.
2.
3.

ii. Write a method to increase pitch (frequency) of sound produced by a guitar.

.....

iii. The diagram given below is illustrating a source of sound. What is the name of it?

.....



C. The given diagram is illustrating a longitudinal section of an onion bulbil.

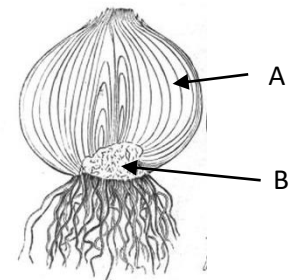
i. Is the above bulbil a root or an underground stem?

.....

ii. Name A and B parts.

A -

B -



iii. Write an example for an underground stem.

iv. Write an adaptation showing the stems given to support.

1. Creeping rose -
2. Bitter gourd -
