

Grade 6

First Term Test - 2019

62

E

Name

CIVIC EDUCATION - I

2 hours

Important :

- Answer all the questions

• Select the answer and write it in the given space for the questions 1 to 5.

1. The institution from these which helps students to become good citizens except family
.....(School / Extra Class / Playground / Children's Club)
2. The major administrative position of a school is(Deputy Principal / Principal / Senior Sectional Head / Head Prefect)
3. A group of people who does not belong to the school organizational structure
(Prefects / Past Pupils / Non- academic Staff / Academic Staff)
4. A bio data form is consisted with details (your father's / your personal / Principal's / Class teacher's)
5. is a duty of you as a student (Safeguarding school property / Breaking the disciplines / Evaluating teachers / Distribution of text books)

• If the given statements from (6) to (10) are right, put a tick (✓), if wrong, put a cross (✗)

6. The accuracy of your name can be confirmed through the birth certificate. ()
7. Dr.C.W.W.Kannangara was the president of the State Legislative Council in 1947. ()
8. A person can improve the skills and talents through a family. ()
9. Impatience is a feature of a successful person. ()
10. Sharing knowledge with friends is a method which can be used to win one's own goals. ()

• Underline the most suitable answer for the questions (11) to(15)

11. What should be done to develop your talents from the following?
 1. Comparing with others.
 2. Performing one's talents occasionally.
 3. Looking silently.
 4. Reading newspapers.
12. What a person should do to minimize the weaknesses?
 1. Identifying one's own weaknesses.

- 2. Defeating the opposition.
 - 3. Lying.
 - 4. Speaking rationally.
13. What is a feature of a child-friendly school?
- 1. Lack of the participation of the community.
 - 2. Having a teacher - centred learning teaching system.
 - 3. Fundamental duties of children cannot be seen.
 - 4. Having a safe learning environment.
14. A quality which should be developed to win challenges is,
- 1. Self- confidence. 3. Obeying to the teachers.
 - 2. Engaging in sports. 4. Working with friends.
15. Because of the planning and organization,
- 1. conflicts are arised. 3. mental stress is reduced.
 - 2. time is wasted. 4. resources are wasted.

• **Answer the questions from 16- 20 using the given pictures.**



- 16. Picture A shows Mr.
- 17. He acted to provide from nursery to university.
- 18. He is known as the

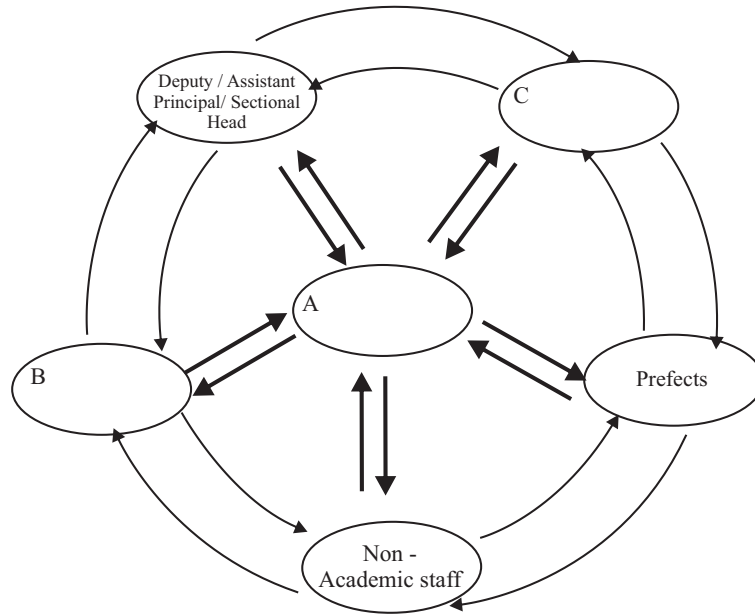


- 19. Picture B shows Prof.
- 20. He was pioneered to establish.....

Part II

- **1 st question is compulsory**
- **Answer all together five questions including the first question and another four questions.**

1. Everything which uses to know about history is sources
- 1. Write two sources that help you to find information about the history of your school.
 - 2. Write two things which show the school identity.
 - 3. Write the names of the Divisional Educational Office and Zonal Educational Office of your school respectively
 - 4. Write two duties of you as a school student.
 - 5. Write two reasons to have a system of rules and regulations in a school.
 - 6. Write two parts of the school culture.
 - 7. Write two instances where school flay is used.
 - 8. Write two weaknesses of you.
2. “ Student is a major part of a school organizational structure ”
- 1. Complete the following diagram which is regarding the organizational structure of a school(03m)



2. Write four duties of the person who is in B (04m)

3. Write four other committees in school organizational structure (04m)

3. 1. Write three methods that can be used to develop the skills and talents of a person (03m)

2. Complete the following table (08m)

| Advantages derived through planning | Disadvantages derived through not planning |
|-------------------------------------|--|
| 1. | 1. |
| 2. | 2. |
| 3. | 3. |
| 4. | 4. |

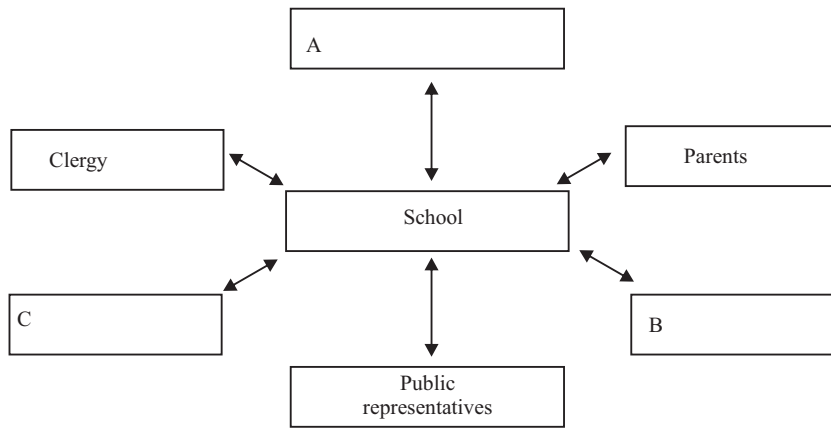
4. 1. Write the rights and the related duties of you as a school student (04)

| Rights | Duties |
|---------|---------|
| 1. | 1. |
| 2. | 2. |
| 3. | 3. |
| 4. | 4. |

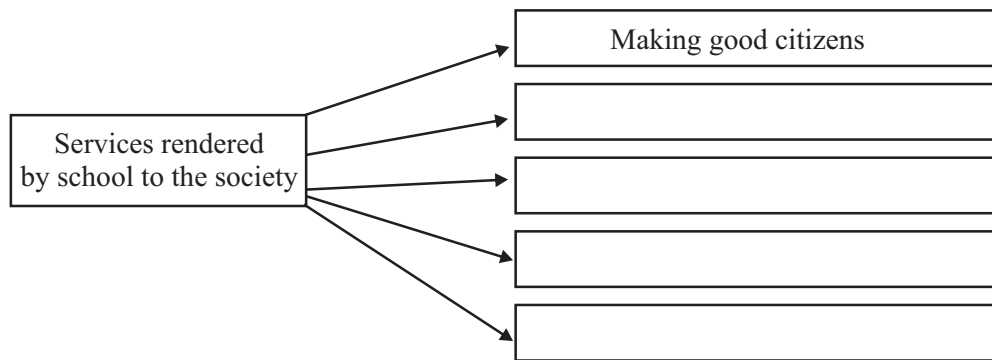
2. Write four facilities that the school provides to you. (04m)

3. Write three duties of you towards teachers. (03m)

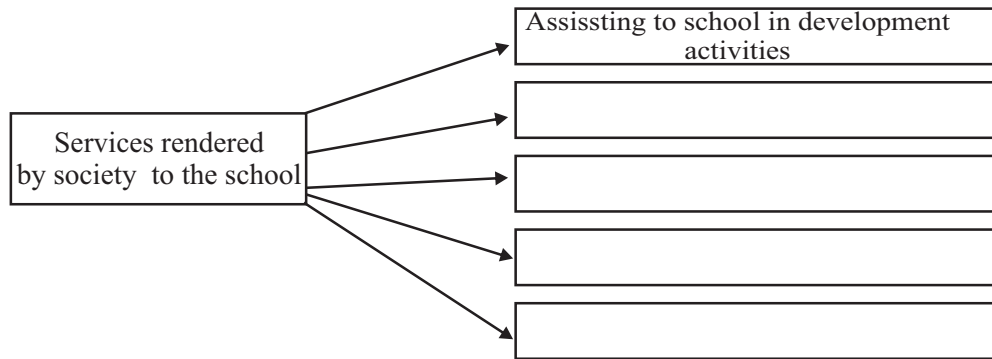
5. 1. Fill the blanks in the given diagram. (03m)



2. Complete the given chart (08m)



(3)



(6). Identify the rules and regulations and traditions in a school and match them correctly (11m)

Rules and Regulations

Traditions

1. To be dressed in the school uniform in the correct standard.
2. Fulfilling religious observances correctly.
3. Attending school regularly.
4. Obedience to leadership.
5. Staying in school during school hours.
6. Working according to a timetable.
7. Arriving at school in time.
8. Keeping correct position when the school anthem is singing.
9. Follow the customs which are coming from past.
10. Respecting teachers.
11. Helping the other students.

First Term Test - 2019
Civic Education (Answers)

Grade 06

Part I

- | | |
|---------------------------------|------------------------------|
| 01.School | 11. 2 |
| 02.Principal | 12. 1 |
| 03.Non-academic staff | 13. 4 |
| 04.Your personal | 14. 1 |
| 05.Safeguarding school property | 15. 3 |
| 06. ✓ | 16. C.W.W.Kannangara |
| 07. ✗ | 17. Free education |
| 08. ✓ | 18. Father of free education |
| 09. ✗ | 19.Prof. Senaka Bibile |
| 10. ✓ | 20.State Osusala |

Part II

1. 1.plaques / old documents /pictures / information from retired principals and teachers / Log books /religious places etc (02m)
2.motto / crest /school flag / school anthem / school uniform / mission statement / vision etc (02m)
3.two (2) marks for correct answers
4.Attending school regularly / study well / Respect the principal and staff / Protect the discipline, rules and regulations (02m)
5.-Making a good learning environment in the school / Controlling the school properly
-Making well disciplinned students
-Safeguarding all the right of everyone etc (02m)
6.rules and regulations in the school, traditions, customs, symbols (02m)
7.Morning assembly, Sportsmeet, other special ceremonies (02m)
8.impatience / quick tempered / lying / impulsiveness / aggressiveness / selfshness (02m)
2. 1. A) student B) Principal C) teachers
2.-Act as the pilot of educational activities
-Assign students into classes and assign teachers
-Preperation of timetables
-Implementation of the curriculum
-Launching development activities to the staff
3.Board of prefects, Environmental society, Discipline committee
3. 1.One's own experiences / Others' life experiences / Through family / Through media / Experience of scholars
2. **Advantages**
1.Save time
2.Facilitate task
3.Use resources frugally
4.Develop self confidence
5.Reduce mental stress
Disadvantages
Wasting time
Missing tasks
Wasting resources
Reduce self confidence
Increase mental stress

4.
 - 1.Right to educate - Educate well
 - Right to develop skills - Showing talents
 - Right to protection - Aware of the protection
 - Right to express ideas - Express disciplinary ideas
 - Right to equality - Living co-operatively
 - 2.Education, Text books, Uniforms, Laboratory facilities, Library facilities, Computer facilities
 - 3.Engaging in education well
 - Helping and assisting when needed
 - Accepting advice
 - Being polite
 - Respect and obidience
5.
 - 1.A) well wishers B) past pupils C) Various organizations
 - 2.-Improving the literacy of the citizens
 - Training future leaders
 - Making law abiding children
 - Giving messages to the community
 - 3.-Protecting the school property
 - Asking services from various organizations
 - Participating various functions
 - Acting to include the cultural heritages and social norms into the school curriculum
- 6.Rules and regulations
 - To be dressed in the school uniform in the correct standard.
 - Attending school regularly
 - Staging in school during school hours
 - Working according to a timetable
 - Obidience to leadership
 - Arriving at school in time

Traditions

 - Fulfill religious observances correctly
 - Keeping correct position when the school anthem is singing
 - Follow the customs which are coming from past
 - Respect teachers
 - Helping other students
7.

| Across | Down |
|------------------|---------------|
| 3.citizens | 1.environment |
| 4.dancing | 2.Library |
| 6.teachers | 7.attention |
| 7.aggressiveness | 8.kindness |
| 11.self esteem | 9. time |