

(11) Select the 'odd one'?

- (i) I have a dream
- (ii) You raise me up
- (iii) Hot cross Buns
- (iv) Heal the world

(12) Which Instrument is also known as 'the clown' of the orchestra?

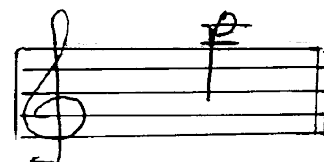
- (i) Oboe
- (ii) piccolo
- (iii) Flute
- (iv) Bassoon

(13) In which composition 'cadenza' can be heard?

- (i) Concerto
- (ii) Opera
- (iii) Oratorio
- (iv) Ballets

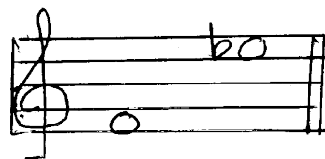
(14) Which one is the correct illustration of the given note?

- (i) the note on the 2nd leger line below the staff of the treble clef is A.
- (ii) the note on the 2nd leger line above the staff of the treble clef is C.
- (iii) the note on the 2nd leger line below the staff of the treble clef is C.
- (iv) the note on the 2nd leger line above the staff of the treble clef is A.



(15) How many semi tones are there in the following Interval?

- (i) 10
- (ii) 11
- (iii) 8
- (iv) 9



(16) Minor triad consists of,

- (i) Major 3rd, Perfect 5th
- (ii) Minor 3rd, perfect 5th
- (iii) Major 3rd, Minor 3rd
- (iv) Minor 3rd, Minor 3rd

(17) Which is the correct way of playing the given ornament?

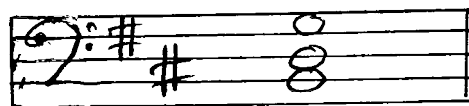


(18) Select the correct form regarding 'Harmonic minor' scale?

- (i) 6th and 7th notes are raised in an ascending way and its lowered in the Descending way.
- (ii) Semi tones occur in 2,3/4, 5/7, 8 in both ascending and descending ways.
- (iii) The minor scale that goes up and comes down in the same way.
- (iv) Minor 7th Interval comes between the tonic and the leading-note.

(19) Which is the correct description?

- (i) Super tonic triad of D major 1st inversion.
- (ii) Sub-median triad of B minor 1st Inversion.
- (iii) Sub-median triad of D major 2nd Inversion.
- (iv) Super tonic triad of B minor 1th Inversion.



(20) The time-Signature for compound duple dotted quaver beats would be

- (i) $\frac{6}{4}$
 - (ii) $\frac{6}{8}$
 - (iii) $\frac{6}{16}$
 - (iv) $\frac{6}{12}$
- (20 marks)

Part II

● Answer the 1st question and select any two from the following. (Answer all 3 questions)

(01)

WILLIAM TELL

GIOACCHINO ROSSINI
Arranged by Denes Agay

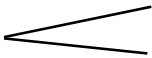
The musical score for 'William Tell' is presented in six systems. Each system consists of a treble and bass clef staff. The piece is in G major (one sharp) and 3/4 time. The tempo is marked 'Allegro'. The first system begins with a forte (*f*) dynamic. The second system features dynamics *sf*, *p*, and the instruction 'staccato sempre'. The third system includes *mf*. The fifth system includes *f* and 'sempre staccato'. The sixth system includes a forte (*B*) dynamic marking. Fingerings and articulation marks are indicated throughout the score.

● Answer the following questions by using the above piece.

- (i) Write the name of this piece?
- (ii) Who is the composer of the piece?.....
- (iii) What is the key of this piece?.....
- (iv) Write the 'Relative minor' of the key?.....
- (v) Describe the time-signature' of the piece?.....
- (vi) What are the 'Rest marks' used?.....

(vii) Name the 'term' marked 'A'?

(viii) Write the English meaning of the following?

All ego -.....
 -.....

(ix) Name the Interval marked 'B' ?

.....

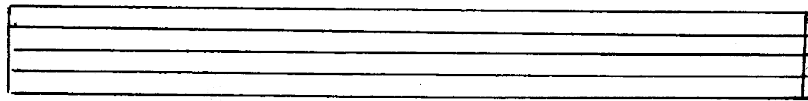
(x) What is the 'curved line ' marked 'C'?

.....

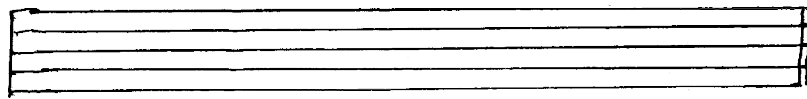
(1 x 10 = 10 marks)

(02) (a) Write the following scales.

(i) B^b major ascending and Descending in Treble clef with out key-signature.



(ii) The relative minor of B major ascending in Bass clef with key-Signature.



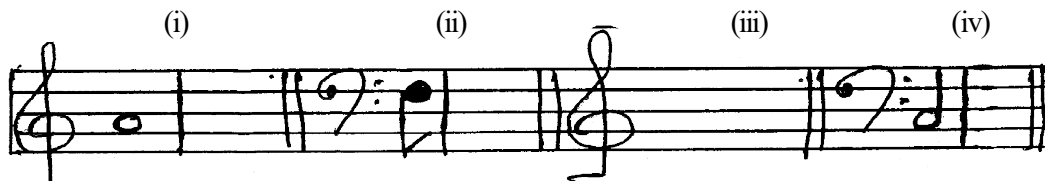
(2 x 2 = 4 marks)

(b) Write the following key-Signatures



(1 x 2 = 2 marks)

(c) Write the following notes.



Diatonic
semi tone
lower

Tone
Higher

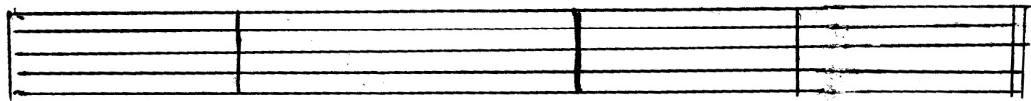
E^b as a semi
quaver on a line

Chromatic
semi tone
higher

(1 x 4 = 4 marks)

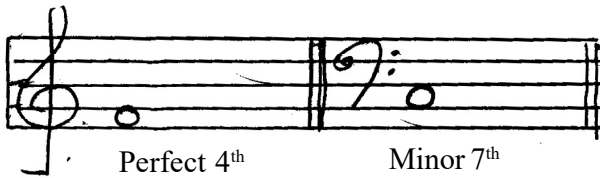
(03) (a) Convert this into western Notation.

ම ග ඊ - | ම ප ධ නි ස | නි ප ධ ඊ | ග - ස - ||



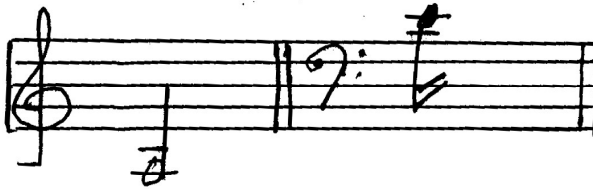
(3 marks)

(b) Write these Intervals



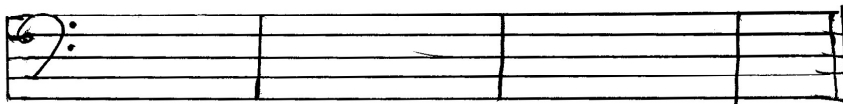
(1 x 2 = 2 marks)

(c) Name the following Notes.



(1 x 2 = 2 marks)

(d) Transpose the following tune an octave lower into Bass clef.



(3 marks)

(04) (a) Add rests and complete.



(2 marks)

(b) Add Bar-lines to the following according to the time-signature.



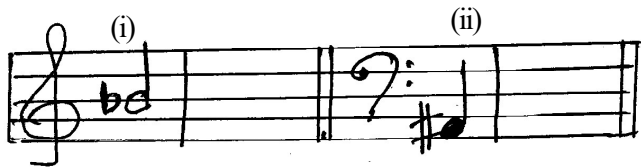
(2 marks)

(c) Add the time - signature for the following.



(1 marks)

(d) Write the Enharmonic Equivalent for the following.



(1 x 2 = 2 marks)

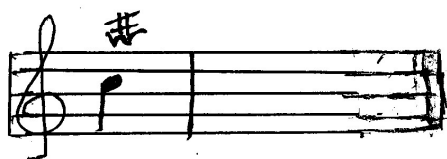
(e) Write the following triads-with key- signature.



(1 x 2 = 2 marks)

D Major triad F Minor sub - dominant triad

(f) Write the ornament in full as, they should be played.



(1 marks)

(05) Fill this puzzle.

ACROSS

1. Different letter names for the same note
2. This Instrument consists of 88 keys.
3. The 'French name'(Sol/Fa) for the tonic of a scale.
4. This term Indicates 'slow'
5. In oriental music this sign is called 'Thievra' (ᲗᲚ)

DOWN

6. This consists of 3 notes.
7. Another name for Episodically form.
8. A large number of players Including String/ Wood-wind/ Brass-wind and percussion Instruments.
9. The distance in pitch between any two notes.
10. The composer who helped to make the piano a successful solo Instrument.

1.				7.		8.		9.	10.
2.									
			6.		3.				
4.									
5.									

(03) (a)

A single staff of music in treble clef, 3/4 time signature. The melody consists of the following notes: G4, A4, B4, C5, B4, A4, G4, F4, E4, D4, C4.

(3 marks)

(b)

Two staves of music. The first staff is in treble clef and contains two whole notes: Bb4 and C5. The second staff is in bass clef and contains two whole notes: Bb3 and C4. A double bar line separates the two staves.

Perfect 4th Minor 7th

(1 x 2 = 2 marks)

(c)

Two staves of music. The first staff is in treble clef and contains two whole notes: A4 and B4. The second staff is in bass clef and contains two whole notes: A3 and B3. A double bar line separates the two staves.

A E

(1 x 2 = 2 marks)

(d)

Two staves of music in 3/4 time. The first staff is in treble clef with a key signature of one sharp (F#). The melody consists of: G4, A4, B4, C5, B4, A4, G4, F4, E4, D4, C4. The second staff is in bass clef with the same key signature, containing the notes: G3, A3, B3, C4, B3, A3, G3, F3, E3, D3, C3.

(3 marks)

(2 marks)

(04) (a)

Two staves of music. The first staff is in treble clef, 3/8 time signature, with a key signature of one sharp (F#). The melody consists of: G4, A4, B4, C5, B4, A4, G4, F4, E4, D4, C4. The second staff is in treble clef, 2/2 time signature, with a key signature of one sharp (F#), containing two whole notes: G4 and C5. Asterisks are placed above the first and last notes of the second staff.

(2 marks)

(b)

A single staff of music in treble clef, 3/4 time signature. The melody consists of: G4, A4, B4, C5, B4, A4, G4, F4, E4, D4, C4.

(1 marks)

(c)

A single staff of music in treble clef, 6/8 time signature. The melody consists of: G4, A4, B4, C5, B4, A4, G4, F4, E4, D4, C4.

(d)

Two staves of music. The first staff is in treble clef and contains two whole notes: Bb4 and C5. The second staff is in bass clef and contains two whole notes: Bb3 and C4. A double bar line separates the two staves.

(1 x 2 = 2 marks)

(e)

Two staves of music. The first staff is in treble clef with a key signature of two sharps (F# and C#) and contains two whole notes: C#5 and F#5. The second staff is in bass clef with a key signature of two flats (Bb and Eb) and contains two whole notes: Bb3 and Eb3.

(1 x 2 = 2 marks)

(f)



(1 marks)

(05)

1.	E	N	H	A	7.	R	M	8.	O	N	9.	I	10.	C
2.	P	I	A	N	O			R			N		H	
					N			C			T		O	
		6.	T		3.	D	O	H			E		P	
4.	L	A	R	G	O			E			R		I	
			I					S			V		N	
5.	S	H	A	R	P			T			A			
			D					R			L			
								A						