



## Royal College - Colombo 07

රාජකීය විද්‍යාලය- කොළඹ 07

Grade 11 - First Term Test –March 2021

Time: 1 hour

### Geography - I

61 E I

Name:- ..... Class: -..... Index no: - .....

- This paper consists of 40 questions.
- Use a separate paper to write answers.

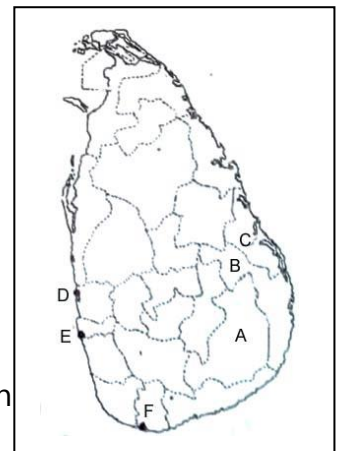
- Select and write the correct answer for questions 1 – 10.
- 1) The total ecological systems integrating plant and animal life which constantly interact is termed the ..... ( lithosphere / atmosphere / biosphere )
  - 2) ..... is a gaseous substance which is present in trace amounts in the atmosphere. ( Helium / Carbon Dioxide / Nitrogen )
  - 3) ..... is not a spontaneous resource among resources in the environment. (sunlight / air / irrigated water)
  - 4) The ..... sea is not connected to the ocean. (Okhotsk / Carribean / Caspian)
  - 5) AT 307 / BG 450 are 2 varieties of .....seeds found in laboratories. ( maize / wheat / paddy)
  - 6) Mica graphite mines such as Thalagoda and Madumana in Sri Lanka are located in .....district. ( Anuradhapura / Polonnaruwa / Matale )
  - 7) ..... rocks were used for construction of stairways, guardstones in Anuradhapura and Mihintale etc. (Gneiss / Limestone / Basalt )
  - 8) The meteorologist ..... is credited as the first to develop a “theory of plate tectonics” ( Ptolemy / Arthur Holenes / Alfred Wegener )
  - 9) Although Sri Lanka is a small island, it is fed by ..... river valleys. (203 / 103 / 63 )
  - 10) ..... is a large ground water basin in Sri Lanka. ( Mulankawil / Anawilundawa / Madunagala )
- If the following statements are true write 'T' and if it is incorrect write "F" for the questions 11 – 15.
- 11) The physical characteristics of the earth are considered to be topography and climate. ( T / F )
  - 12) The export earnings are 24% (2012) and employment is 31% in the agricultural sector in Sri Lanka. ( T / F )
  - 13) Rocks are formed by minerals. ( T / F )
  - 14) Granite, Basalt and Gabbro belong to the sedimentary rock type. ( T / F )

15) Around 76% of the total world population lives in the two continents of Asia and Europe. (T/ F)

• Write short answers for the following questions from 16 – 25.

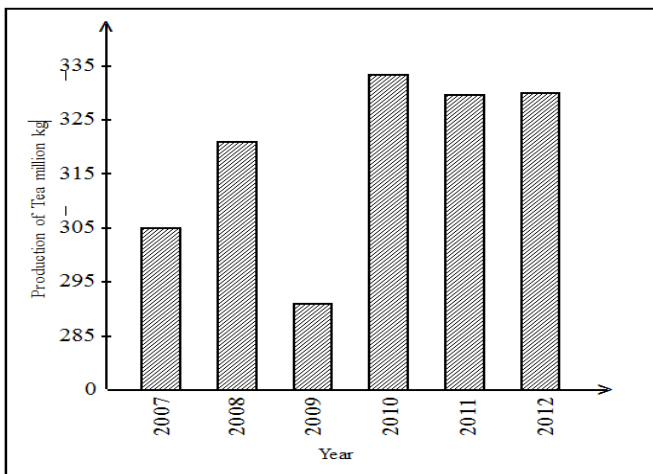
- 16) ..... monsoon rains are active in Sri Lanka from May to September.
- 17) There are 20 national parks and about ..... sanctuaries in Sri Lanka.
- 18) Research institute at Kananwila is engaged in activities such as .....
- 19) By the year....., the world population had grown to one billion.
- 20) There are around ..... countries which have a population of over a 100 million.

• Use the following Sri Lankan map to write answers for the questions 21 and 22.



- 21) Which letter depicts the district in which the Senanayaka Samudraya, one of the main reservoirs of Sri Lanka, is located.....
- 22) Letter ..... depicts the Koralawella area which manufactures boats in Sri Lanka.

• Use the following graph which shows the quantity of Tea production in Sri Lanka, to write answers for the questions 23 – 25.



- 23) What is the highest value of Tea production in Sri Lanka ? .....
- 24) What were the years that had similar amount of productions ? .....
- 25) What was the year in which tea production declined ? .....

•

- From questions 26 – 30 select the correct answer from A and B sides and write the number of the correct answer group.

- 26)
- |  |   |
|--|---|
| 'A'<br>1) Ice caps<br>2) Ground water<br>3) Usable surface water | 'B'<br>A. 8%<br>B. 1%<br>C. 20%<br>D. 79% |
| 1) BCD                      2) DCB                               | 3) ABC                      4) CBA        |

27) Answer when wildlife reserves are matched.

- |  |  |
|--|--|
| 'A'<br>1) Sanctuaries<br>2) Nature reserves<br>3) National parks | 'B'<br>A. Thriconamadhu<br>B. Udawalawa<br>C. Ritigala<br>D. Madu road |
| 1) ABC                      2) BCA                               | 3) DAB                      4) ADB                                     |

28) Answer when the main soil types in Sri Lanka are matched with suitable cultivation,

- |  |  |
|--|--|
| 'A'<br>1) Red brown soil<br>2) Red yellow latosol soil<br>3) Alluvial soil | 'B'<br>A. Paddy<br>B. Fruits<br>C. Chena<br>D. grass |
| 1) ABC                      2) BCD   | 3) ACD                      4) CBA                   |

29) The continent to which the following lakes belong,

- |   |  |
|---|--|
| 'A'<br>1) lake Erie<br>2) lake Titicaca<br>3) lake Eyre | 'B'<br>A. Australia<br>B. North America<br>C. Africa<br>D. South America |
| 1) ACD                      2) ABC                      | 3) DCB                      4) BDA                                       |

30) The export villages established for each crops.

'A'

- 1) Betel
- 2) Chillies
- 3) Cashew

'B'

- A. Rajangana
- B. Dambadeniya
- C. Katugampola
- D. Bata - Atha

- 1) BCD
- 2) DCB
- 3) ABC
- 4) CAB

- Write the number which belongs to the correct answer.

31) Which sector is currently the most influential sector providing capital in setting up industries in the world.

- 1) voluntary organizations
- 2) private sector
- 3) Multinational corporation
- 4) state sector ( )

32) Select the correct answer for the 3 countries which are engaged in commercial dairy farming in the Southern Hemisphere.

- 1) India, Newzealand, Denmark
- 2) Australia, Newzealand, Argentina
- 3) India, China, Argentina
- 4) Denmark, Argentina, Australia ( )

33) The least populous district in Sri Lanka is,

- 1) Jaffna
- 2) Mannar
- 3) Vavunia
- 4) Mulativu ( )

34) The following factor depends on natural growth and migration,

- 1) population compostion
- 2) population growth
- 3) population density
- 4) population distribution ( )

35) It is not a main city which belongs to the African continent.

- 1) Nairobi
- 2) Lagos
- 3) Cairo
- 4) Buenos Aires ( )

36) Vertical and horizontal lines of the grid system in metric maps are drawn in.

- 1) red
- 2) blue
- 3) black
- 4) brown ( )

37) The place that has been selected as the base point to prepare the metric grid system in compiling the Sri Lankan metric map.

- 1) Peak of Namunukula
- 2) Peak of Samanala
- 3) Peak of Piduruthalagala
- 4) Peak of Thotapola ( )

38) The actual land area covered by a map sheet of 1:50,000 metric map of Sri Lanka.

- 1) 50 km<sup>2</sup>
- 2) 80 km<sup>2</sup>
- 3) 500 km<sup>2</sup>
- 4) 1000 km<sup>2</sup> ( )

39) What is the value of 60 minutes in degrees ?

1)  $180^{\circ}$

2)  $60^{\circ}$

3)  $30^{\circ}$

4)  $1^{\circ}$

( )

40) In the upper margin of the outer border, letter B shows,

1) Type of map

2) scale

3) Number of the map

4) Name of the map

( )

40 marks