

බස්නාහිර පළාත් අධ්‍යාපන දෙපාර්තමේන්තුව மேல் மாகாணக் கல்வித் திணைக்களம் Department of Education - Western Province		2021 විරෂ අවසාන ඇගයීම ஆண்டிறுதி மதிப்பீடு Year End Evaluation
ශ්‍රේණිය } தரம் } 8 Grade }	විෂය } பாடம் } SCIENCE Subject }	පත්‍රය } வினாத்தாள் } i/ii Paper }
		පැය } மணித்தியாலம் } 2 Hours }

Part 1

Answer all the questions

Select the correct or the most appropriate answer

1. The organism show in the picture is



1. Bacteria 2. Algae 3. Fungi 4. Protozoan

2. As shown in the picture when sugar and yeast are mixed in a solution and a balloon is fixed to the mouth of the bottle. What can you observe?



1. Exerting carbon dioxide gas 2. The balloon has been inflated
 3. evaporating ethyl alcohol 4. Smelling ethyl alcohol

3. An organism which doesn't have a vertebral column

1. Centepede 2. Goose 3. Pigeon 4. magpie

4. Out of the following part belongs to the root system of a plant?

1. Leaves 2. Stem 3. Fruits 4. Tap root

5. The piece of chalk is discontinuous. It is because,

1. the piece of chalk consists tightly packed particles . 2. a large number of spaces among particles
 3. water consists among particles 4. The solid nature of the piece of chalk

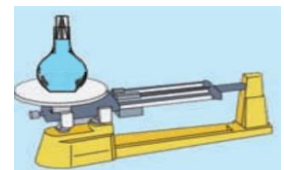
6. What is the colour of Sulphur powder?

1. Black 2. Blue 3. Yellow 4. Colourless

7. Select two lab equipment used to compare densities of given liquids,

1. beaker and density bottle 2. specific and gravity bottle and triple beam balance
 3. triple beam balance and boiling tube 4. Beaker and boiling tube

8. What is the process of giving off of water vapor by evaporation mainly through the stomata in leaves during the day time,



1. Transpiration 2. Guttation 3. Diffusion 4. Mass flow

9. Select the type of lighting which is harmful to people and their property mostly.

1. Cloud lighting 2. Air lightning 3. Earth lightning 4. Lateral lighting

10. Of the following which response show parts of digestive system only,
1. eye, ear, intestine
 2. stomach, duodenum, intestine
 3. nose, bronchioles, lungs
 4. mouth, bronchus, lungs
11. What is the minimum number of geo-stationary satellites that should be positioned around the earth according to sir Arther C. Clerke
1. 1
 2. 2
 3. 3
 4. 4
12. A total solar ecipse occurs on a
1. new moon day
 2. Wanning gibbos moon
 3. Full moon poyaday
 4. Waxing gibbos moon
13. The zodic Sagittarius is positioned
1. In between Gemini and Leo
 2. In between Leo and Libra
 3. In between scorpio and Eapricorn
 4. In between Capricorn and Pisces
14. Which one is the instrument that can be used to measure electrical resistance?
1. Ohm meter
 2. Ammeter
 3. Volt meter
 4. Galvanometer
15. Sublimation is,
1. solid changes directly into liquid
 2. solid changes directly into gas
 3. liquid changes directly into gas
 4. Gas changes directly into liquid
16. "Hydrogen gas filled balloons cannot be used in aeroplanes jets or in space exploration". What is the reason for this statement?
1. As they used fuel.
 2. As they have engines
 3. As there is medium of air
 4. As they do not have rocket technology
17. Of the following natural disasters which one harm minimum to Sri Lankans
1. Drought
 2. Flood
 3. Lightning
 4. Earthquakes
18. As children of eco-friendly, what should be considered mostly when buying food,
1. net weight
 2. standard
 3. date of manufacture
 4. whether the packing materials are eco-friendly
19. Mosquito is a vector insect of dengue disease. Smoking prevent dengue in urban areas, by destroying a certain stage of its life cycle. What is that particular stage of mosquito?
1. adult mosquito
 2. eggs
 3. pupa
 4. larva
20. The concept that cannot be used in homes when covid is affected
1. Bio-bubble concept
 2. Washing hands with soap
 3. Social-distance
 4. Wearing masks

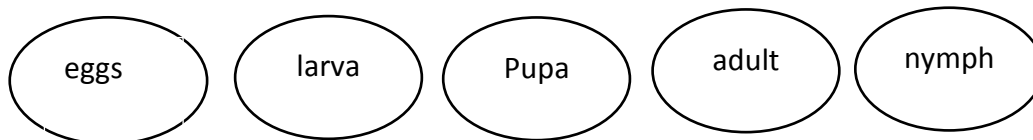
Part II

- Answer five questions including the first one.

1. A. All living beings are born an egg, a seed or as a small creature, and they pass through a life cycle.

1. What is meant by a life cycle?

2. Following are few stages in a life cycle select suitable stages and complete the life cycle of butterfly



3. Which type of metamorphosis does it show?

4. Mention organs used by adult to get food

5. Name a parasitic insect which shows the above type of metamorphosis

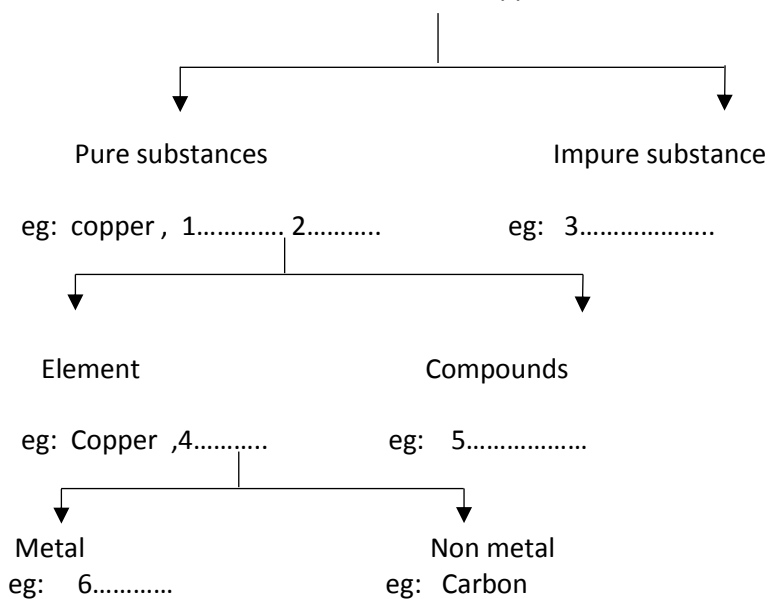
B. Filling the blanks in the table with words given in the bracket

(dragonfly, Tuna, Lion, Leech)

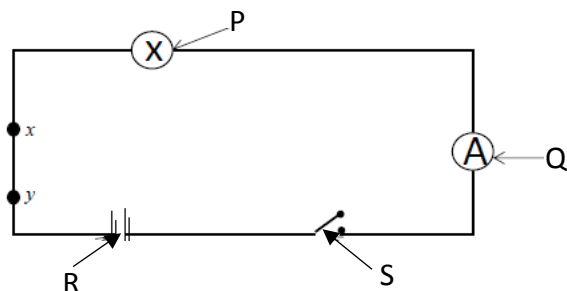
Invertebrate	Vertibrate

C. Given below are few matters used very often. Complete the classification of matter using given examples.

Air, sodium chloride, carbon, copper

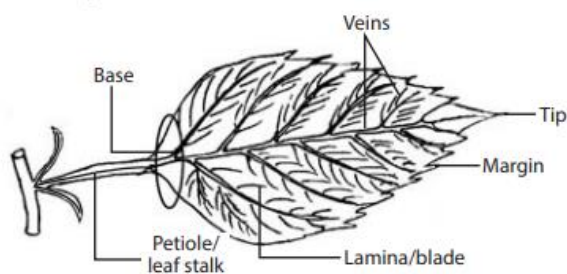


2. A. Given below is a circuit diagram done by a grade 8 pupil



1. Name P,Q, R parts
2. If you want to measure the voltage at two ends of P, Draw the circuit diagram with the necessary equipment to measure it. (Copy the circuit diagram onto your answer script)
3. If you placed a same type of equipment in series to P, what difference can you observe?
4. When you placed 20 Ω resistance in between X and Y what difference can you observe?

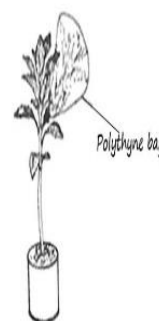
B. 1. Name parts A and B in the leaf given below



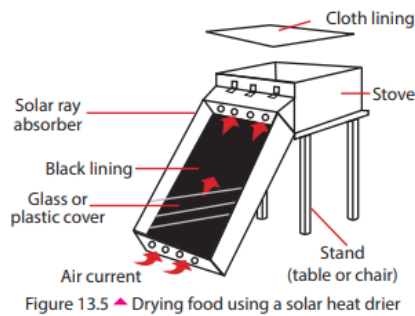
2. What is the function of a leaf?
3. Write uses of leaf arrangement to the plant?
4. Write 2 plants with leaves that produce new plants.
5. Name 2 plants with fleshy leaves

3. A. A potted plant covered by a transparent polythene bag is kept under the direct sunlight

1. Write an observation of the set up after some time.
2. What is the reason for this observation?
3. Name the process of giving off of water vapor by evaporation through the aerial parts of plant.
4. Name the chemical used to identify water.

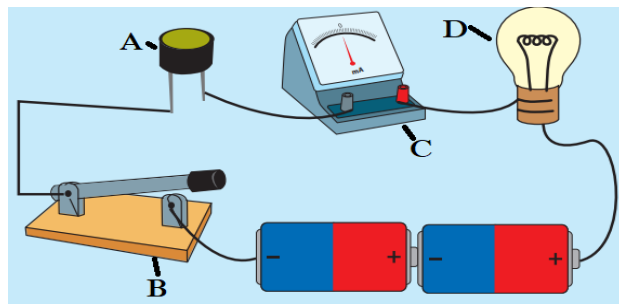


B. Given below is a picture of a solar heat driver.



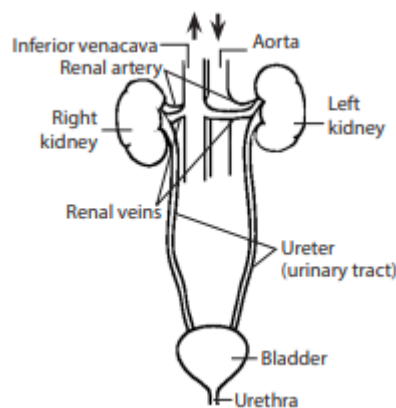
1. What is the function of this equipment?
2. Name 2 food items that preserve from this.
3. Write 2 advantages of using this equipment.
4. What happens to the air current that passes through black lining of this equipment?
5. Write the reason for using this equipment more suitable for the countries close to the equator.

4 . A. The circuit has designed to observe when light falls on a light dependent resistor



1. Name A,B,C and D parts.
2. What can you observe when 'B' is on and the set up is kept in darkness.
3. What can you observe when 'B' is on and the set up is kept well expose to light?
4. Write the part in this circuit which is more light sensitive.
5. Draw the above circuit diagram using symbols.

B .



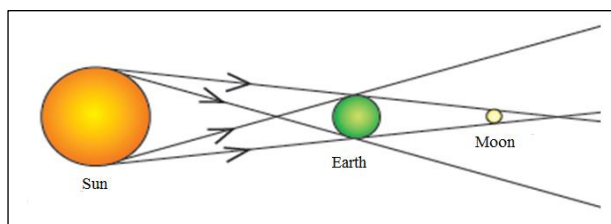
1. Write the system according to the diagram given above.
2. Write the function of this system.
3. Name a disease associated with this system

5. A. Sri Lanka has taken a decision to stop importing chemical fertilizers to direct farmers towards using organic fertilizers.

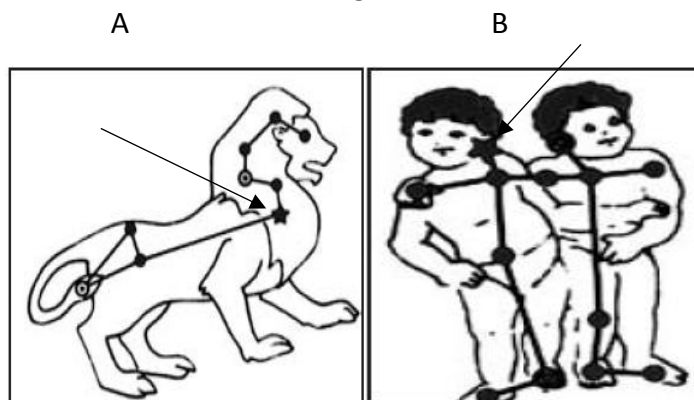
1. What is meant by organic fertilizers ?
2. What is the colour of organic fertilizers?
3. Name raw materials used to produce organic fertilizers.
4. Write the group of organisms which is helpful in producing organic fertilizers.
5. Write two advantages of using organic fertilizers in a cultivating land
6. Write two disadvantages of using organic fertilizers

B. If following statements are correct put (√) mark and if incorrect put (x) mark.

1. Skin is protected from ultra violet rays as it has melanin pigments . ()
2. The substances that get subjected to change during a chemical reaction are called reactants ()
3. Favourable nature of food changes due to enzymes formed and it is called self-decomposition ()
4. Lunar eclipse is shown by the diagram .()



- 6 . A.
1. Name all planets in our solar system respectively.
 2. What is the time taken by the moon to rotate around the earth?
 3. Given below A and B are two zodiacs. Name brightest stars in these.



4. What is the unit used to measure the distance between stars.
5. Name the equipment used to say the location of a star or a planet.
6. Mention a difference between a star and a planet.

B. Match A and B

	A	B
1.	Metal	singing birds
11.	micro organism	Magnesium
111.	source of sound	Amoeba
1v.	a unit to measure resistance	Ohm

7. A.
1. Name the process of making food in green plants.
 2. What is the gas that removes from the atmosphere during the above mentioned process?
 3. What is the chemical used to identify starch?
 4. What is the gas that emit from the plants during the above mentioned process.
 5. Write one use of the above mentioned gas.
 6. What is the process in which particles move randomly from a region of higher concentration to a region of lower concentration.

B. Underline the most suitable word within the bracket

1. (Potatoes /Sugar cane) is a plant that store food in the aerial stem.
- 2..... (gas / solid) can be compressed easily.
3. A sharp sound can be obtained by a guitar when tension of strings is (decreased / increased)
4. Phenopthaline gets pink colour when(acid / base) added to it.
5.(urine / Carbon dioxide) is a main nitrogenous excretory product in human body

බස්නාහිර පළාත් අධ්‍යාපන දෙපාර්තමේන්තුව

වර්ෂ අවසාන ඇගයීම 2021

8 ශ්‍රේණිය - විද්‍යාව පිළිතුරු පත්‍රය

1 කොටස

- | | | | | |
|-------|-------|-------|-------|-------|
| 1. 4 | 2. 2 | 3. 1 | 4. 4 | 5. 2 |
| 6. 3 | 7. 2 | 8. 1 | 9. 3 | 10. 2 |
| 11. 3 | 12. 1 | 13. 3 | 14. 1 | 15. 2 |
| 16. 4 | 17. 4 | 18. 4 | 19. 1 | 20. 1 |
- ල - 2 x 20 = 40

11 කොටස

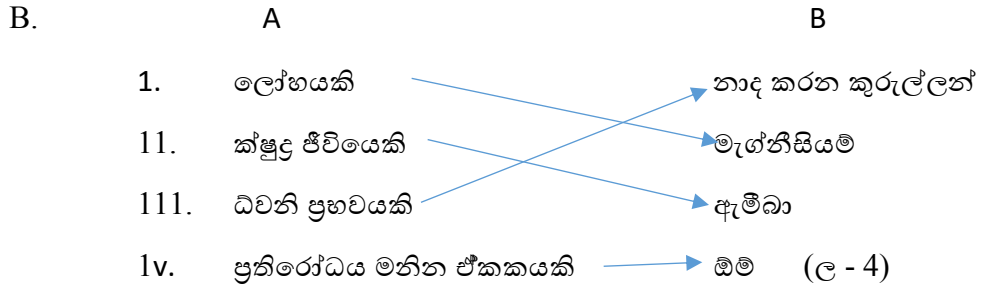
1. A. 1. ජීවියෙකු උපතේ සිට ජීවිත කාලය තුළ පසුකරන අවදි හෝ අවස්ථා අනුපිලිවෙල ල .2
 2. නිවැරදි ජීවන චක්‍රය ල .3 3. සම්පූර්ණ රූපාන්තරණය ල .1
 4. ශුණ්ඩාව ල .1 5. පළතුරු මැස්සා ල .1
- B . අපෘෂ්ඨ වංශීන් - බත්කුරා, කුඩැල්ලා පෘෂ්ඨ වංශීන්- කෙලවල්ලා , සිංහයා ල. 2
- C. 1. සෝඩියම් ක්ලෝරයිඩ් 2. කාබන් 3. වාතය 4. කාබන් 5. සෝඩියම් ක්ලෝරයිඩ් 6.කොපර් ල .6
 මුළු ලකුණු . 16
2. A 1. P- විදුලි බලය Q- ඇමීටරය R -වියළි කෝෂ ල .3
 2. වෝල්ට් මීටරය ල .1 නිවැරදි පරිපථය ල .1
 3. එහි දීප්තිය අඩුවේ ල .1 4. බල්බවල දීප්තිය තවත් අඩුවේ ල .1
- B. 1. A පත්‍ර නාරටි B පත්‍ර අග්‍රය ල-1 2. ප්‍රභසංශ්ලේෂණය ල-1
3. හොදින් ආලෝක ශක්තිය ග්‍රහණය කර ගැනීමට හැකිවීම ල-1
4. අක්කපාන ,කඩුපුල් , බිගෝනියා ල-1 5. නිවැරදි පිළිතුර ල .1 මුළු ලකුණු . 11
3. A.1. පොලිතින් බැගය තුල ද්‍රවබන්දු තැන්පත්වීම ල-1
 2. ශාක පත්‍රවලින් ජලය පිටවීම ල-1 3. උත්ස්වේදනය ල-1 4. නිර්ජලීය කොපර්සල්ෆේට් ල-1
- B. 1. ආහාර වියලා ගැනීම සඳහා ල-1 2. මිරිස් ,කොස්ල .1
 3. ශක්තිය සඳහා මුදල් වැය නොවීම /පිරිසිදුව වියලීම / ල-2 4. රත්වේ ල-1
 5. සූර්ය තාපය හොදින් ලැබෙන නිසා / වසර පුරා සූර්ය තාපය ලැබෙන නිසා ල-2

මුළු ලකුණු . 11

4. A. 1. A ආලෝක සංවේදී ප්‍රතිරෝධය , B ස්විච්ඡය C ඇමීටරය D බලබය ල-2
 2. බලබය නොදැල්වේ ල-1 3. බලබය දැල්වේ ල -1
 4. A / ආලෝක සංවේදී ප්‍රතිරෝධය ල-1 5. නිවැරදි රූපය ල . 2
 B. 1. මුත්‍ර වාහිණි පද්ධතිය ල-1 2. මුත්‍ර පෙරීම ල-2
 3. මුත්‍ර ගල් ඇතිවීම/වෘක්ක අකර්මණ්‍ය වීම/ආසාදන ල-1 මුළු ලකුණු . 11

5. A. 1. දිරාගිය ශාක හා සත්ත්ව කොටස් ල - 1 2. කළු ල-1
 3. ගොම , පිදුරු , ගිරිසිලියා / ගැලපෙන පිළිතුර ල-2 4. ක්ෂුද්‍ර ජීවීන් ල-1
 5. පසේ ගුණාත්මක බව වැඩිදියුණු වීම , පාංශු ජීවීන්ට ආහාර ලැබීම ල-2
 6. පාංශු ජීවීන් විනාශ වීම , පස නිසරු වීම ල-2
 B. 1. (√) 2. (√) 3. (√) 4. (√) (ල - 2)

6. A. 1. බුදු , සිකුරු , පෘථිවි , අභහරු , බ්‍රහස්පති , සෙනසුරු , යුරේනස් , නෙප්චූන් ල-2
 2. දින 27.3 ල-1 3. A - රෙගියුලස් B - පොලක්ස් ල . 1
 4. ආලෝක වර්ෂ ල . 1 5. ආනතිමානය ල . 1 6. නිවැරදි පිළිතුර ල . 1



මුළු ලකුණු . 11

7. A.
 1. ප්‍රභාසංස්ලේෂණය ල . 1 2. කාබන්ඩයොක්සයිඩ් වායුව ල . 1
 3. අයඩින් ද්‍රාවණය ල . 1 4. ඔක්සිජන් වායුව ල . 1
 5. නිවැරදි පිළිතුර ල . 1 6. විසරණය ල . 1

- B.
 1. උක් 2. වායු 3. වැඩි 4. හස්මයකට 5. මුත්‍ර ල -5

මුළු ලකුණු . 11